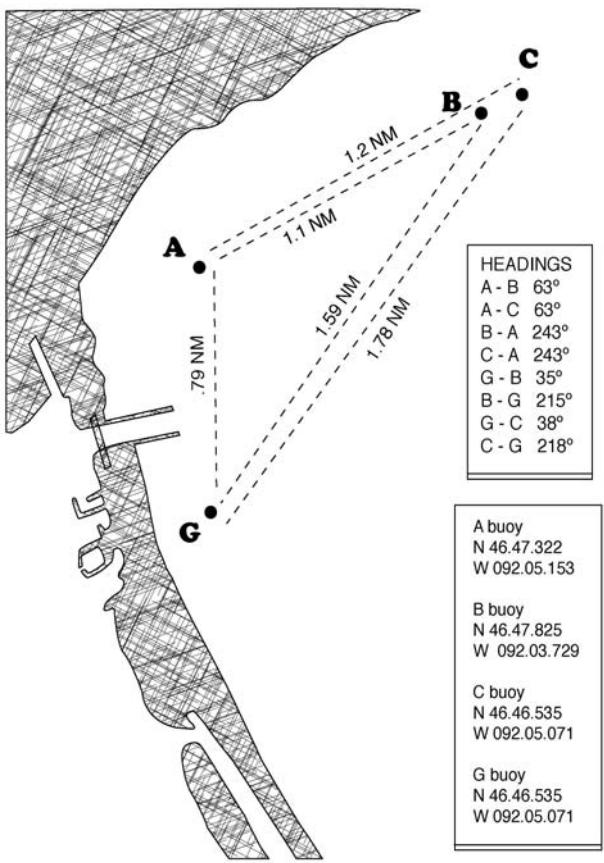


DYC 2008 Courses

Code Marks

- L1 A B A B A
- L2 A C A C A
- L3 A C A
- L4 M G M G M G
- L5 G M G M G
- L6 A B G A B A
- L7 A C G A C A
- L8 G Superior Entry, R18 Starboard, Finish Between G1 and Pier Wall (11.1nm)
- M1 Movable, W2 Short Course
- M2 Movable, W2 Long Course
- M3 Movable (W2 ½)
- B1 M G1 G5 R2 G1 G5 R2 G1
- B2 Mid Ch, G7 Mid Ch G7 Mid Ch (4.4nm)
- X Pre-determined Course @ Skipper meeting

LAKE COURSES



NORTH END DULUTH HARBOR

